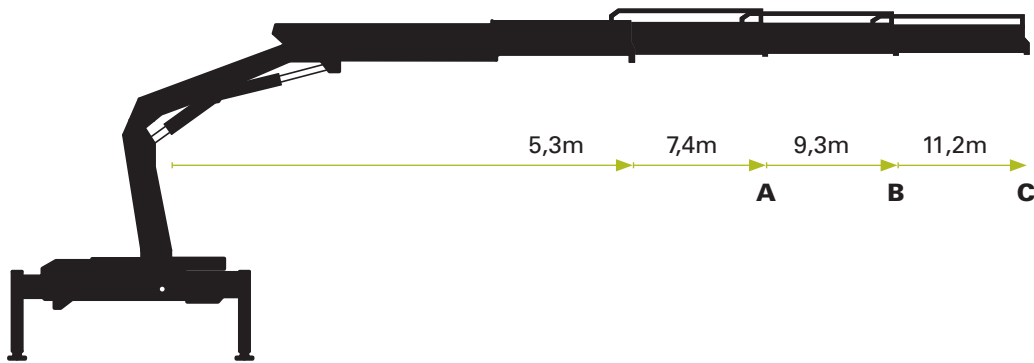


Technische Daten (EN 12999 H1-B3) | Technical specifications | Caractéristiques techniques | Datos técnicos

Max. Hubmoment | Max lifting moment | Couple de levage | Momento de elevacion: **57,9 kNm / 5,9 mt**  
Schwenkmoment | Slewing torque | Couple de rotation | Par de giro neto: **7,8 kNm / 0,8 mt**



PK 6501-HP

Reichweite / Hubkraft | Outreach / lifting force | Portée / force de levage | Alance / capacidad

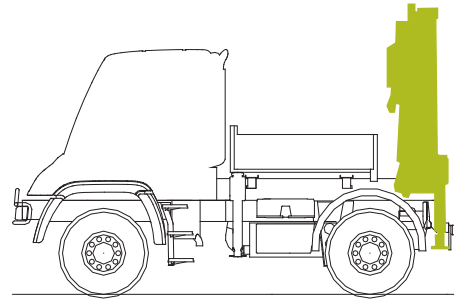
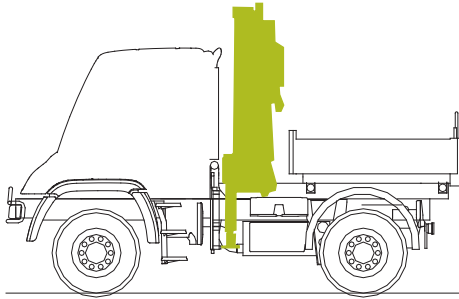
Standard	A	B	C
m / kg	m / kg	m / kg	m / kg
3,5 / 1680	3,5 / 1600	3,6 / 1520	3,8 / 1440
5,2 / 1120	5,3 / 1040	5,5 / 970	5,6 / 910
	7,1 / 770	7,2 / 700	7,5 / 640
		9,1 / 550	9,4 / 480
			11 / 410

Allgemeine Informationen

Beim Kranaufbau sind länderspezifische Vorschriften zu beachten / Please observe the respective national regulation when installing the crane / En montant la grue, il faut respecter les consignes en usage dans le pays / Para la superestructura de grúa se deben observar las normas específicas nacionales

Technische Daten und Konstruktionsänderungen vorbehalten. / Technical Specifications and construction modifications subject to change. / Sous réserve de modifications techniques. / Con reserva de los Datos Técnicos y modificaciones de la construcción.

Baumuster / Radstand

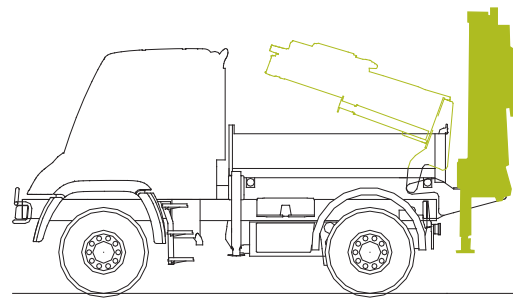
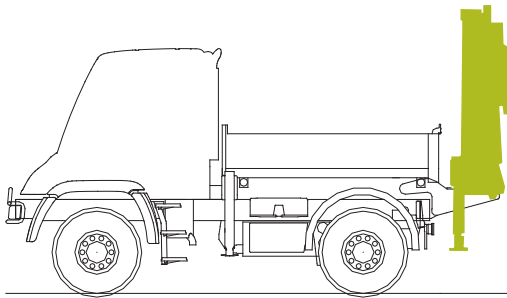


405.101 / 3.080  
405.121 / 3.600  
405.201 / 3.350  
437.421 / 3.250  
437.431 / 3.250

405.103 / 3.080  
405.123 / 3.600  
405.221 / 3.900  
437.426 / 3.850  
437.436 / 3.550

405.101 / 3.080  
405.121 / 3.600  
405.201 / 3.350  
437.421 / 3.250  
437.431 / 3.250

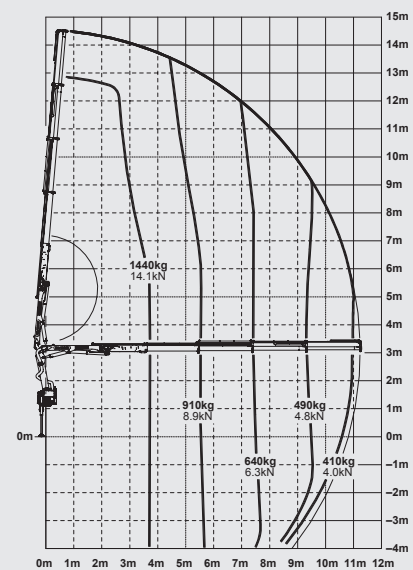
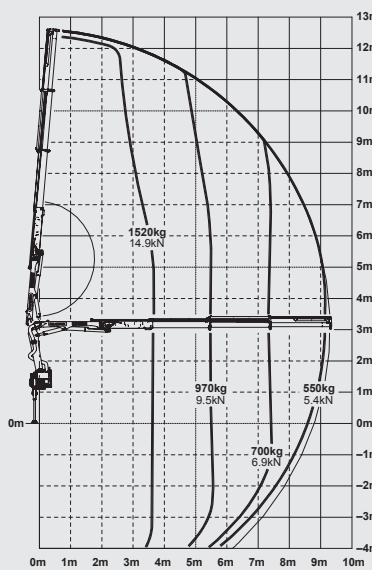
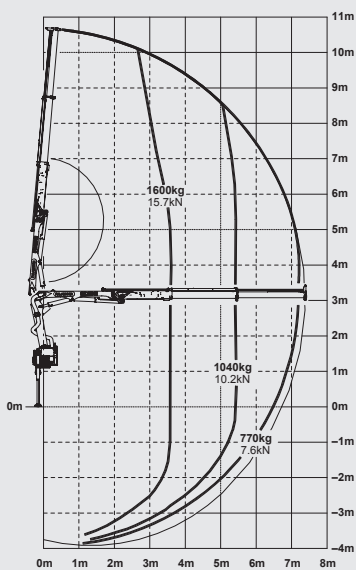
405.103 / 3.080  
405.123 / 3.600  
405.221 / 3.900  
437.426 / 3.850  
437.436 / 3.850



PK 6501-HP A

PK 6501-HP B

PK 6501-HP C



Gesamthubhöhe » siehe Diagramm | Overall height » see diagram  
Hauteur totale » voir diagramme | Belgae alure » vis diagrama

