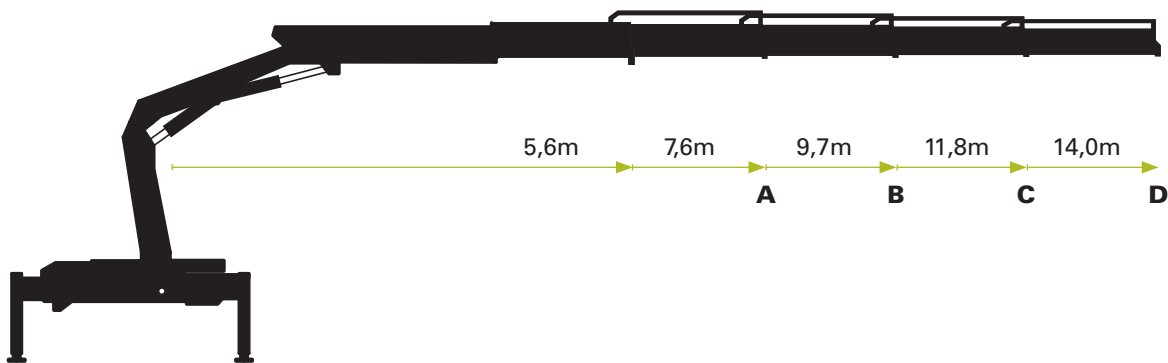


Technische Daten (EN 12999 H1-B3) | Technical specifications | Caractéristiques techniques | Datos técnicos

Max. Hubmoment | Max lifting moment | Couple de levage | Momento de elevacion: **76,5 kNm / 7,8 mt**

Schwenkmoment | Slewing torque | Couple de rotation | Par de giro neto: **9,8 kNm / 1,0 mt**



PK 8501-HP

Reichweite / Hubkraft | Outreach / lifting force | Portée / force de levage | Alance / capacidad

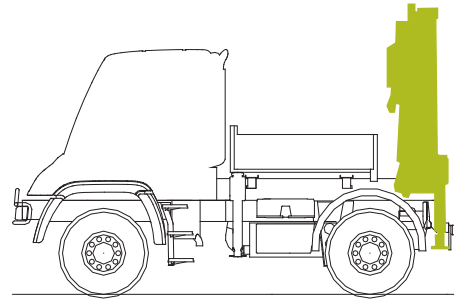
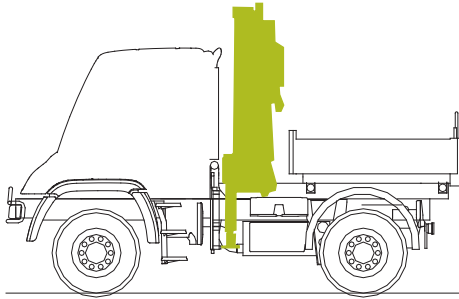
Standard	A	B	C	D
m / kg	m / kg	m / kg	m / kg	m / kg
3,5 / 2200	3,6 / 2100	3,9 / 2000	3,8 / 1880	3,9 / 1760
5,4 / 1440	5,5 / 1340	5,6 / 1240	5,7 / 1140	5,8 / 1060
	7,4 / 1000	7,5 / 900	7,6 / 800	7,7 / 710
		9,5 / 700	9,6 / 600	9,7 / 510
			11,6 / 480	11,7 / 400
				13,7 / 320

Allgemeine Informationen

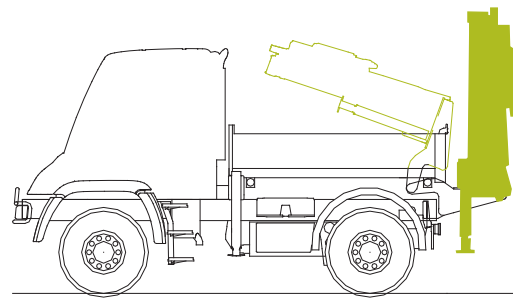
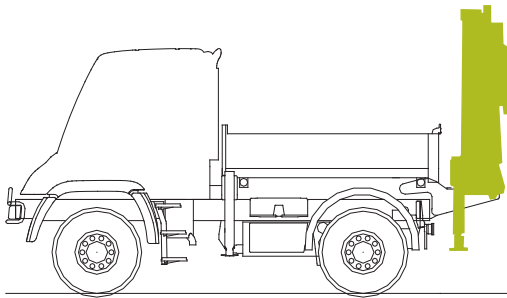
Beim Kranaufbau sind länderspezifische Vorschriften zu beachten / Please observe the respective national regulation when installing the crane / En montant la grue, il faut respecter les consignes en usage dans le pays / Para la superestructura de grúa se deben observar las normas específicas nacionales

Technische Daten und Konstruktionsänderungen vorbehalten. / Technical Specifications and construction modifications subject to change. / Sous réserve de modifications techniques. / Con reserva de los Datos Técnicos y modificaciones de la construcción.

Baumuster / Radstand



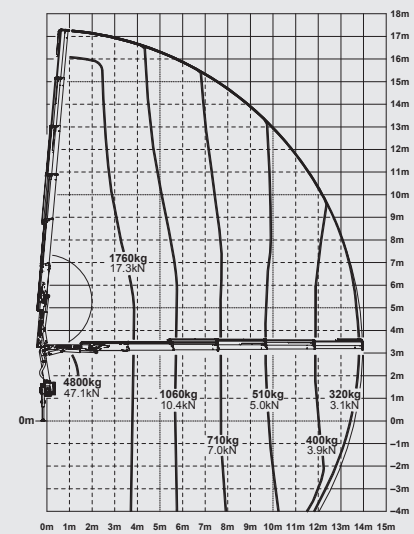
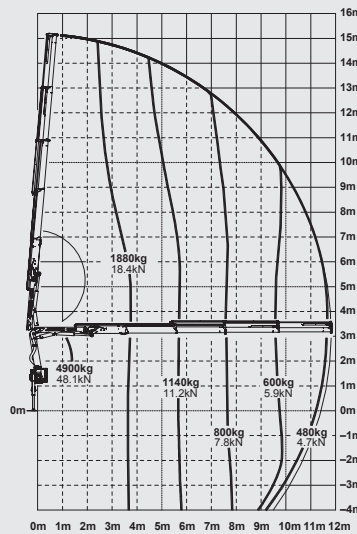
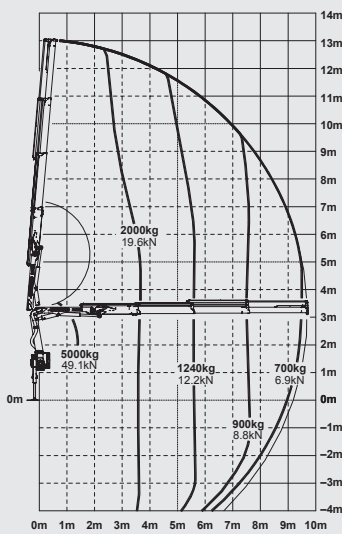
405.101 / 3.080	405.103 / 3.080	405.101 / 3.080	405.103 / 3.080
405.121 / 3.600	405.123 / 3.600	405.121 / 3.600	405.123 / 3.600
405.201 / 3.350	405.221 / 3.900	405.201 / 3.350	405.221 / 3.900
437.421 / 3.250	437.426 / 3.850	437.421 / 3.250	437.426 / 3.850
437.431 / 3.250	437.436 / 3.850	437.431 / 3.250	437.436 / 3.850



PK 8501-HP B

PK 8501-HP C

PK 8501-HP D



Gesamthubhöhe » siehe Diagramm | Overall height » see diagram
Hauteur totale » voir diagramme | Belgae alure » vis diagrama