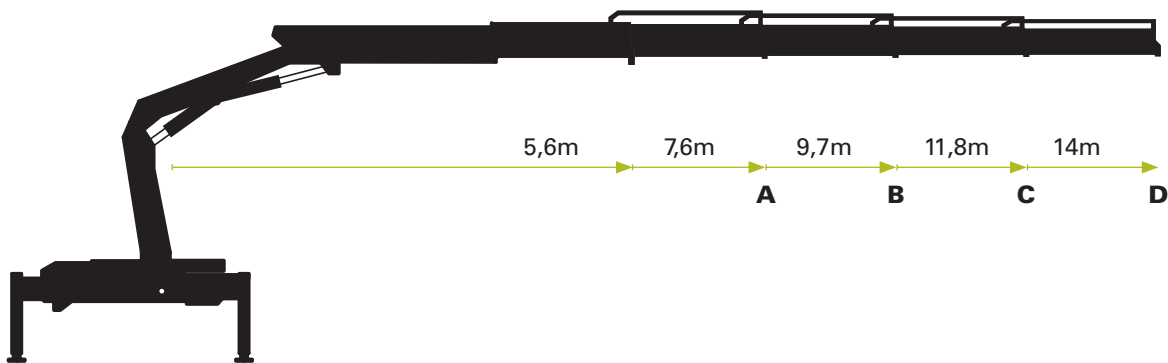


Technische Daten (EN 12999 H1-B3) | Technical specifications | Caractéristiques techniques | Datos técnicos

Max. Hubmoment | Max lifting moment | Couple de levage | Momento de elevacion: **85,3 kNm / 8,7 mt**

Schwenkmoment | Slewing torque | Couple de rotation | Par de giro neto: **9,8 kNm / 1,0 mt**



PK 9001-EH

Reichweite / Hubkraft | Outreach / lifting force | Portée / force de levage | Alance / capacidad

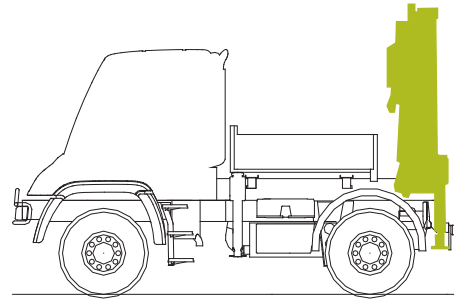
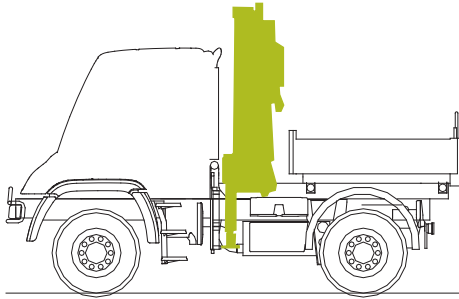
| Standard   | A          | B          | C          | D          |
|------------|------------|------------|------------|------------|
| m / kg     | m / kg     | m / kg     | m / kg     | m / kg     |
| 3,5 / 2450 | 3,6 / 2350 | 3,7 / 2200 | 3,8 / 2100 | 3,9 / 2000 |
| 5,4 / 1600 | 5,5 / 1500 | 5,6 / 1400 | 5,7 / 1300 | 5,8 / 1200 |
|            | 7,4 / 1120 | 7,5 / 1020 | 7,6 / 920  | 7,7 / 830  |
|            |            | 9,5 / 780  | 9,6 / 700  | 9,7 / 600  |
|            |            |            | 11,6 / 560 | 11,7 / 470 |
|            |            |            |            | 13,7 / 380 |

Allgemeine Informationen

Beim Kranaufbau sind länderspezifische Vorschriften zu beachten / Please observe the respective national regulation when installing the crane / En montant la grue, il faut respecter les consignes en usage dans le pays / Para la superestructura de grúa se deben observar las normas específicas nacionales

Technische Daten und Konstruktionsänderungen vorbehalten. / Technical Specifications and construction modifications subject to change. / Sous réserve de modifications techniques. / Con reserva de los Datos Técnicos y modificaciones de la construcción.

Baumuster / Radstand

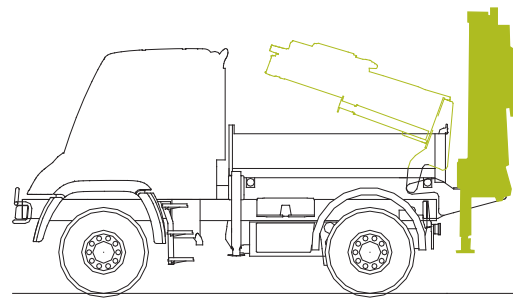
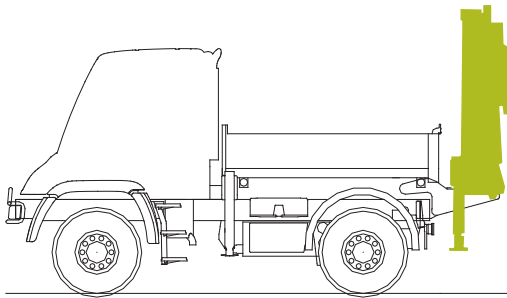


405.101 / 3.080  
405.121 / 3.600  
405.201 / 3.350  
437.421 / 3.250  
437.431 / 3.250

405.103 / 3.080  
405.123 / 3.600  
405.221 / 3.900  
437.426 / 3.850  
437.436 / 3.850

405.101 / 3.080  
405.121 / 3.600  
405.201 / 3.350  
437.421 / 3.250  
437.431 / 3.250

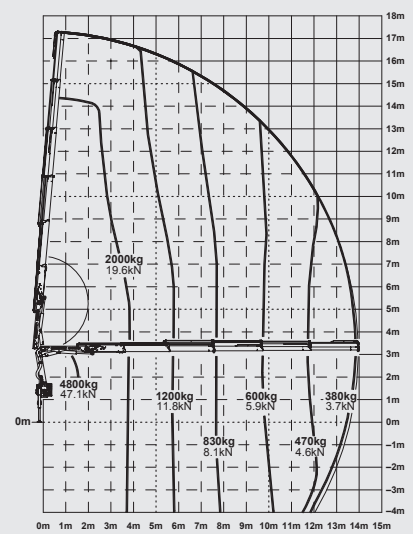
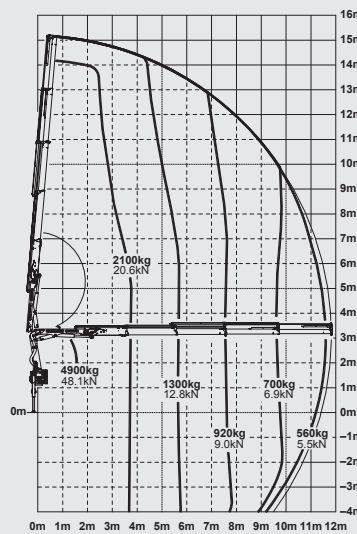
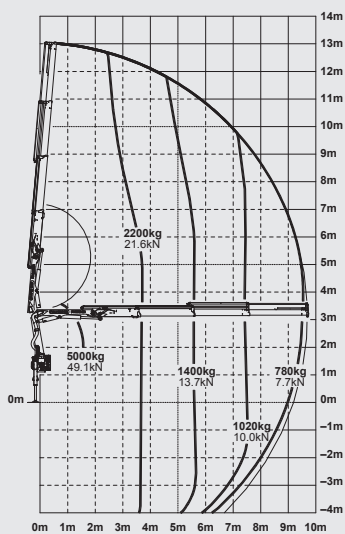
405.103 / 3.080  
405.123 / 3.600  
405.221 / 3.900  
437.426 / 3.850  
437.436 / 3.850



PK 9001-EH B

PK 9001-EH C

PK 9001-EH D



Gesamthubhöhe » siehe Diagramm | Overall height » see diagram  
Hauteur totale » voir diagramme | Belgae alure » vis diagrama

